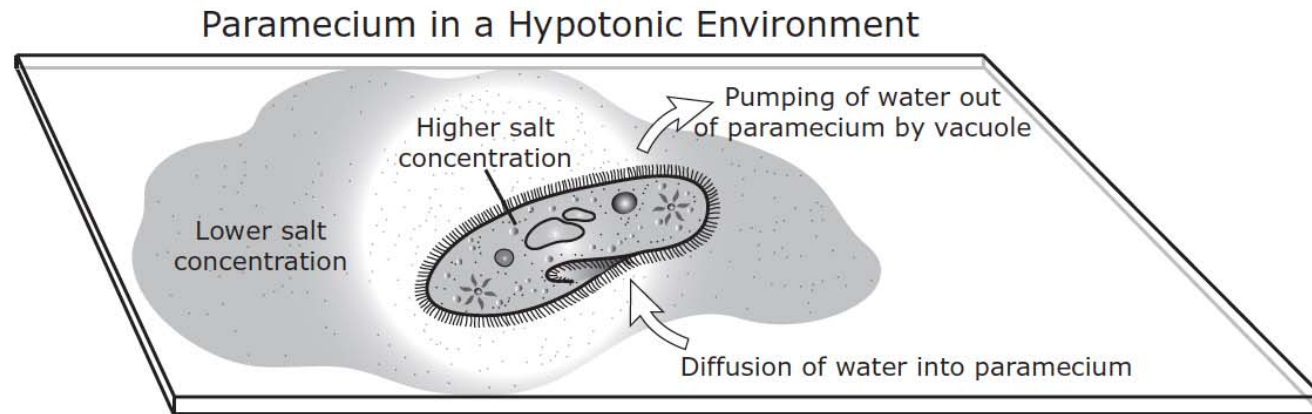


Released TAKS 2006

- 1** Which of the following organelles is involved in storing material in a plant cell?
- A** Vacuole
 - B** Mitochondrion
 - C** Golgi body
 - D** Cell membrane

Released STAAR 2011

- 2 The diagram below shows how a paramecium maintains homeostasis. A paramecium normally lives in a hypotonic environment in which water continually diffuses into the cell. To maintain homeostasis, the paramecium must pump out large amounts of water using its contractile vacuole.



If the paramecium is then placed in a hypertonic environment, which of the following will occur?

- A Water will diffuse into the paramecium.
- B Water will diffuse out of the paramecium.
- C Salt will be pumped out of the paramecium by the vacuole.
- D Salt will be pumped into the paramecium by the vacuole.